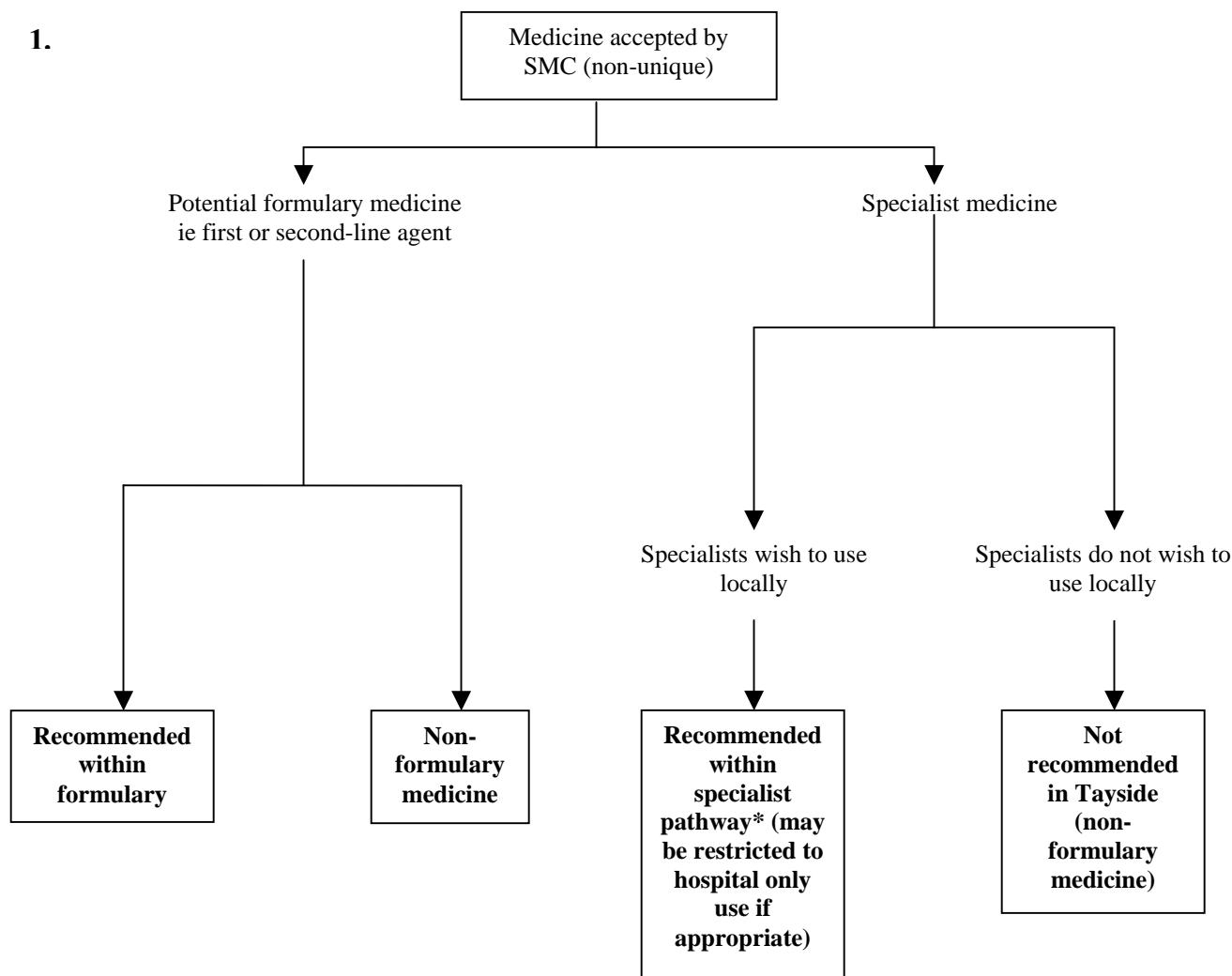


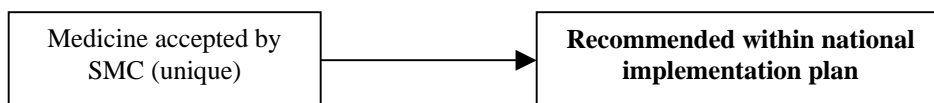
## MAG Categorisation of SMC Advice

1.

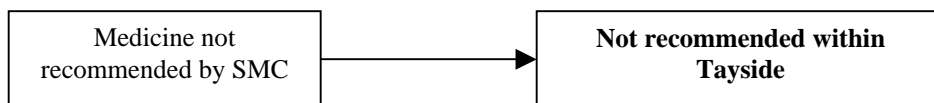


*\*Interim recommendation of “Currently not recommended – pending new medicine treatment protocol” may be used if protocol defining patient criteria prescriber details, monitoring etc. required.*

2.



3.



- Local advice issued within one week of SMC advice being available in public domain
- SMC unique advice implemented within three months from SMC advice being available in public domain
- Funding addressed separately via budget holders