

Tayside Prescriber

ADTC Supplement No. 15

September 2001

EVALUATION OF NEW DRUGS IN TAYSIDE

In this issue, the mechanism for evaluating new drugs, novel formulations of established drugs and related therapies is summarised in a flowchart, see overleaf. From November 2001, the Scottish Medicines Consortium will commence the evaluation of the clinical effectiveness of all new drugs (new chemical entities, formulations and indications), once licensed, and advise Health Boards accordingly. The Drug Evaluation Panel's remit will be restricted to advising the Board on local issues around cost-effectiveness and implications for practice in Tayside.

RECENT DRUG EVALUATIONS

Esomeprazole (Nexium®) Appeal

Category 3: not recommended

Following appeals from GI physicians and surgeons and several Tayside GPs, ADTC representatives are seeking a meeting with specialists to clarify any future role for this drug. Further advice will follow.

Glimepiride (Amaryl®)

Category 3: not recommended

Glimepiride is a new generation sulphonylurea for treatment of Type 2 diabetes. In reaching its decision, the DEP consider that existing drugs of this class are more cost-effective in practice.

Gliclazide slow-release (Diamicron® MR)

Category 3: not recommended

Gliclazide is a current formulary drug administered in once or twice daily dosage. Generic gliclazide, costing substantially less than the new slow-release product, is already available.

DRUG and CLINICAL TRIAL EVALUATIONS PENDING

The following drugs have been reviewed by the Drug Evaluation Panel and will be considered at the next meeting of the ADTC in December 2001.

Desloratidine (NeoClarityn®) antihistamine

Gemcitabine (Gemzar®) for pancreatic cancer

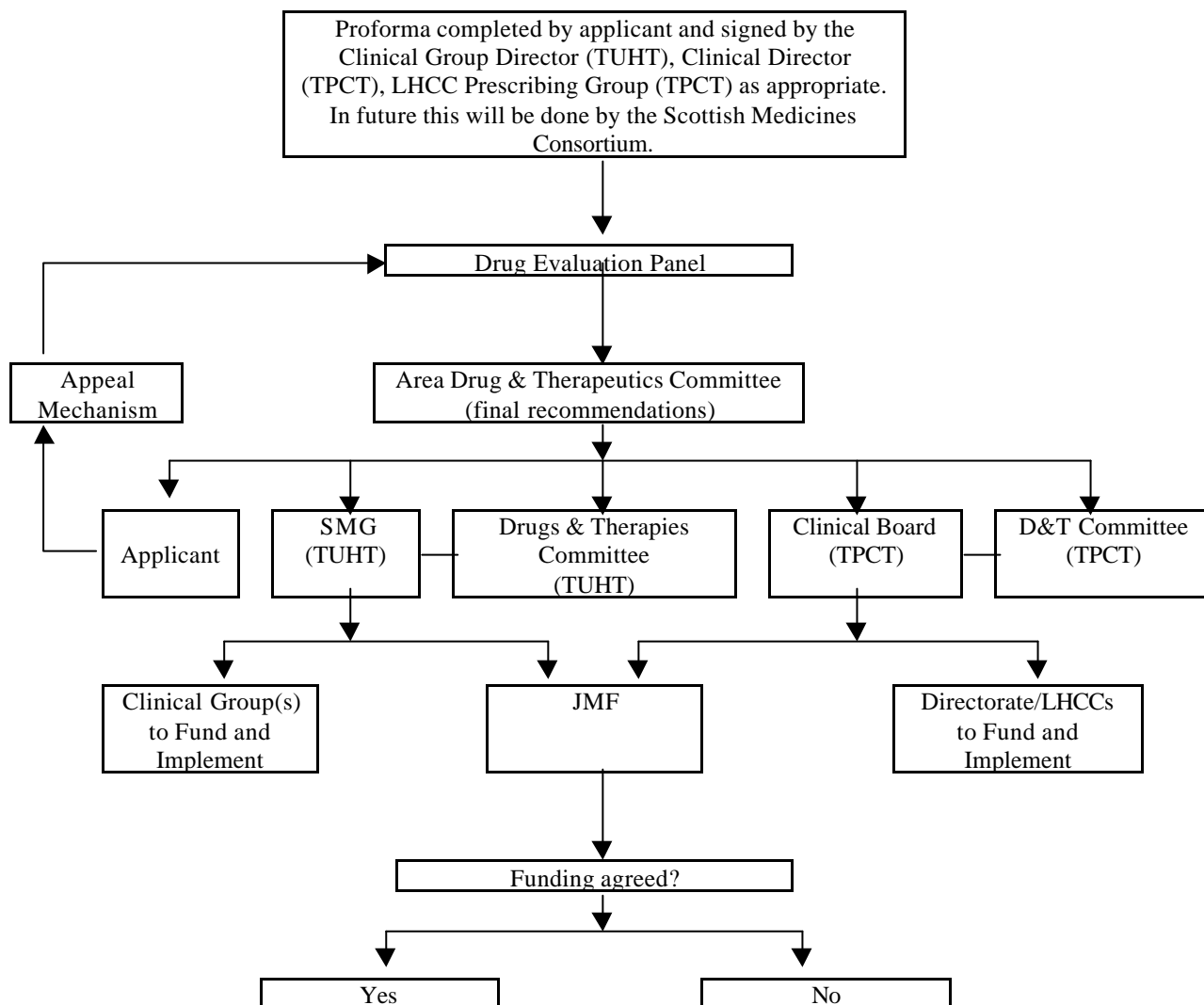
Imatinib (Glivec®) for chronic myeloid leukaemia

Nateglinide (Starlix®) for type 2 diabetes

Oral transmucosal fentanyl citrate (Actiq®) for breakthrough pain

In addition, the Panel will review the CURE (clopidogrel + aspirin trial in acute coronary syndromes) and PROGRESS (perindopril +/- indapamide) trials and make recommendations on their impact in clinical practice.

PROCEDURE FOR THE INTRODUCTION OF NEW DRUGS IN TAYSIDE



- SMG implements in TUHT via the Clinical Groups. TPCT advises LHCC about new drugs and offers guidance to prescribers via the Tayside Prescriber.
- JMF route to be used in exceptional circumstances only for drugs with clear benefits, but costs cannot be met by Trusts.
- New drugs only introduced in TUHT if they can be funded from existing budgets in the relevant Clinical Groups or, if referred, only if funding is forthcoming from JMF.
- Application for new drug submission forms to the Drug Evaluation Panel available from Medicines Information Service, Department of Pharmacy, Ninewells Hospital. Email gmacconnachie@tuht.scot.nhs.uk.